



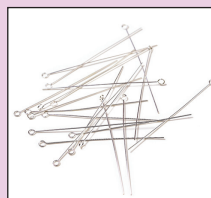
BASIC BEAD GLOSSARY

The issues glossary takes a peak at different uses of Sterling Silver in Jewellery making. The number of components and findings is endless so we have selected a few, including some new ideas, that you will enjoy using in your next project.

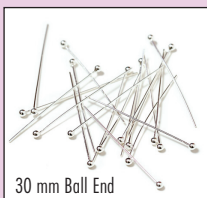
Headpins/ Eye pins

Eye pin: A length of wire that has a loop at one end, used to thread beads on.

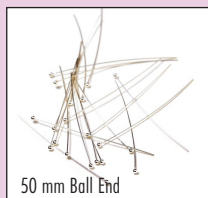
Headpin: A length of wire with a flat or decorative end, used to thread beads on.



100 mm Ball End



30 mm Ball End



50 mm Ball End



Dome

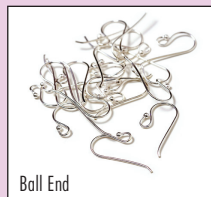


Pearl

Ear Wires/ Hoops/ Chandeliers

Earwires/ Hoops: The component part that attaches to the ear, headpins or chandeliers can be connected to them to make earrings.

Chandeliers: Chandeliers are most often used for earrings, with a decorative drop added to the rings so that they dangle like a chandelier.



Ball End



Euro Ear



CZ marq. Shepp



Clip on Earring



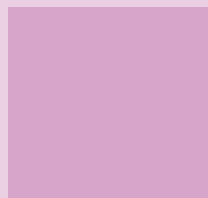
4mm Ball Stud



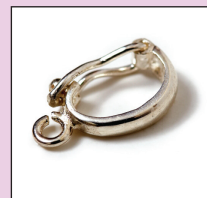
16mm * 36mm Chandelier

Bails/ Enhancers

Bails: Bails are used with headpins to make your own Pendants.



Enhancers: Enhancers are like bails and can be opened to fit over a strand of beads and then locked closed.

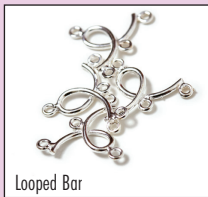


Connector/Linking beads

A decorative component used to connect, enhance or lengthen a designed piece of jewellery.



5mm CZ



Looped Bar



6mm * 13 mm



Heart Scroll Link



4 Ring Connector

Pendants/Charms

An ornament designed to be attached or suspended from a chain, earring or necklace.



Diamond Drop



Pendant



Stardust



Tassel

Chain/Wire

Sterling Silver wire is used instead of eyepins as it a cheaper and less wasteful alternative.



Fine Chain



.05 Wire

